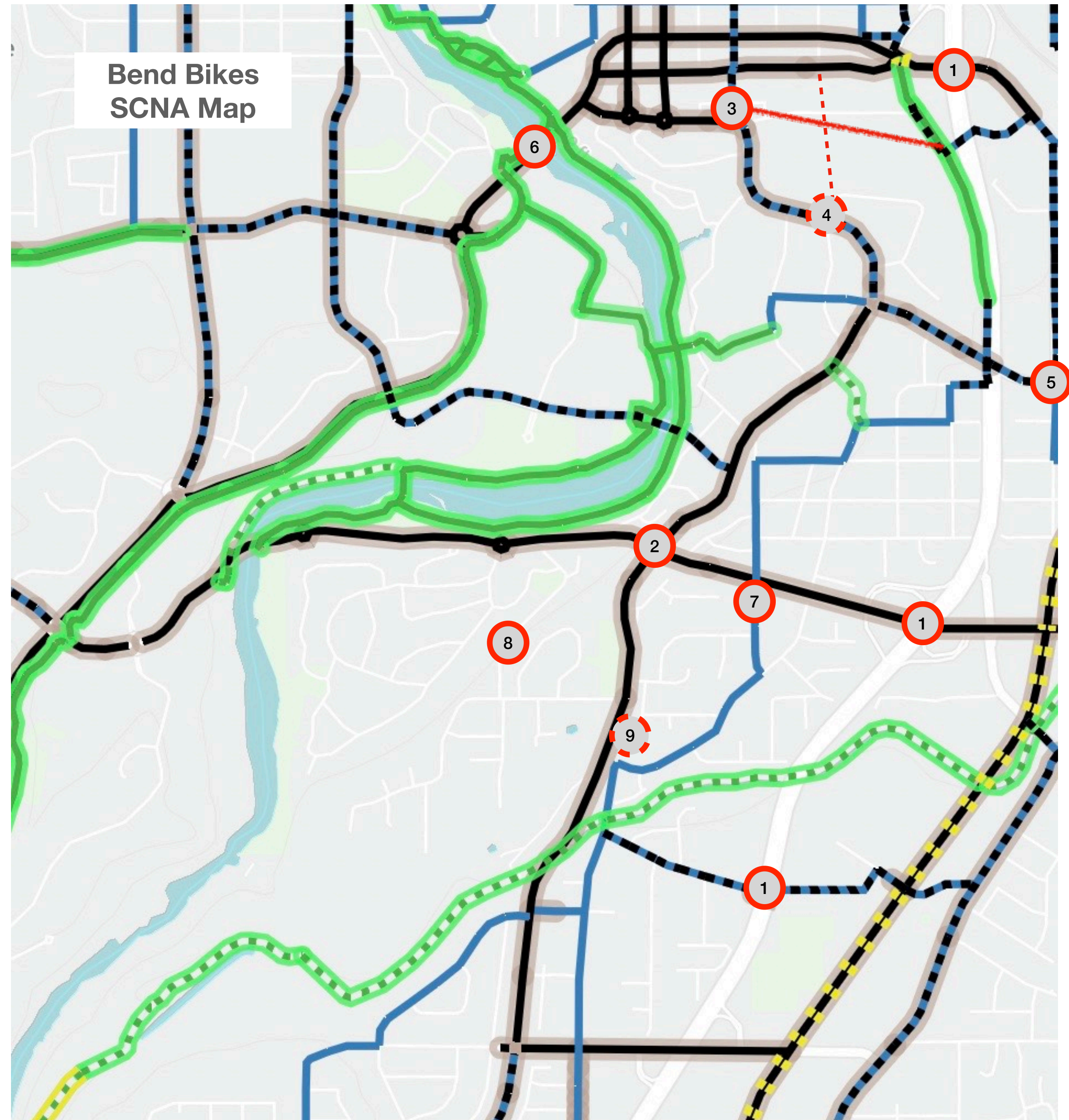


## Why do we need a SCNA Transportation Team?

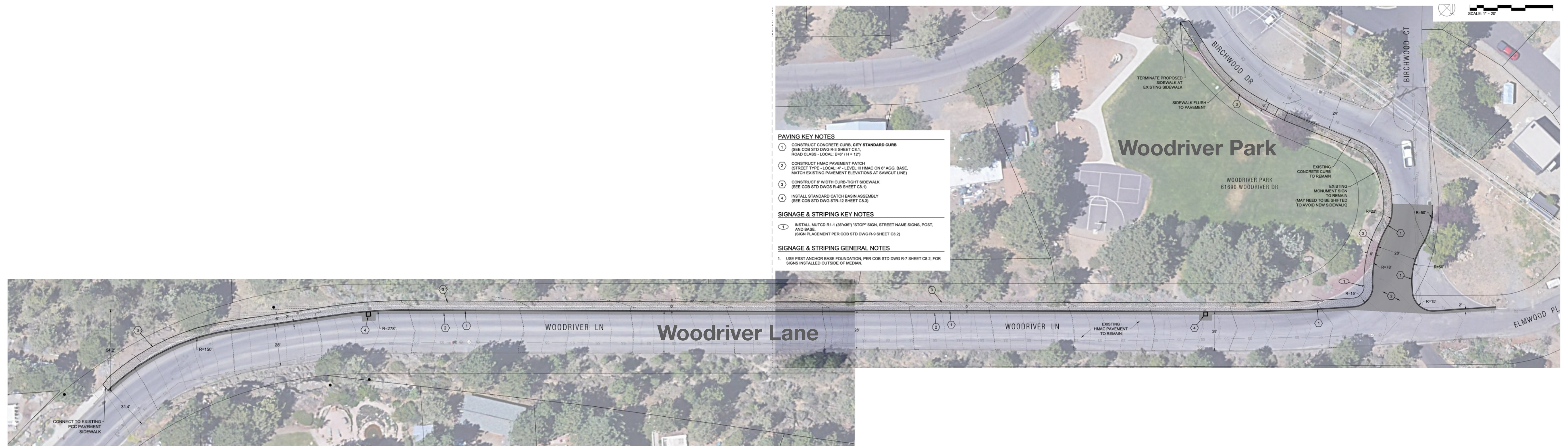
- ① Hwy 97 Interchange Upgrades
- ② Reed Market & Bond Intersection
- ③ Aune west extension to new Bond Roundabout
- ④ Potential Siesmore south extension to new Bond Roundabout. N.B. - Route thru KorPine TBD
- ⑤ Wilson & 2<sup>nd</sup> Street Intersection
- ⑥ Colorado Ave widening
- ⑦ Chamberlain St Cut Through (NSSP)
- ⑧ Woodriver Lane Sidewalk (NSSP)
- ⑨ Potential Brooksmill Estates Cut Through





# Neighborhood Street Safety Program

## Woodriver Lane Sidewalk



## To McClellan Road



# Neighborhood Street Safety Program

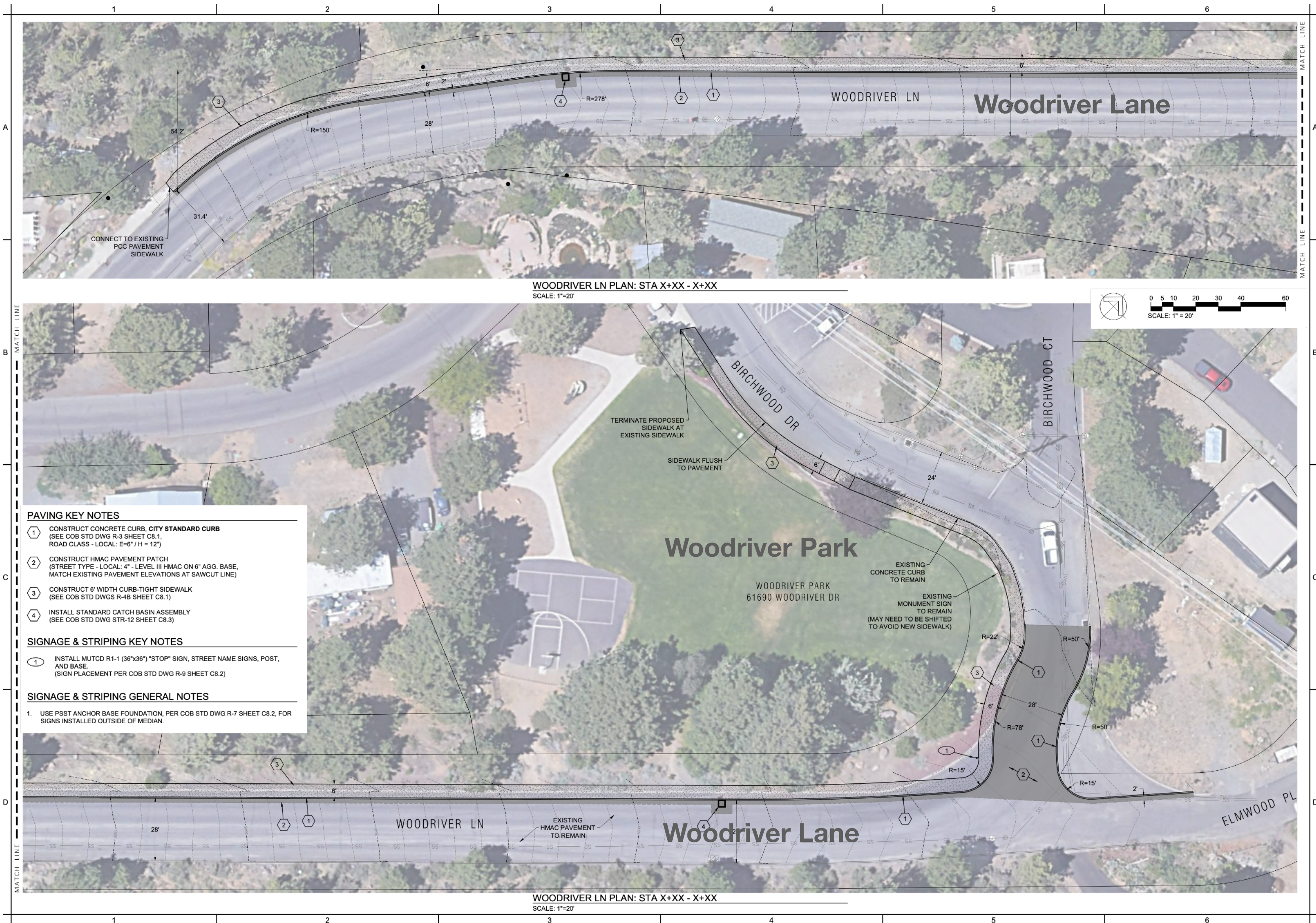
## Chamberlain Street





# Neighborhood Street Safety Program

## Woodriver Lane Sidewalk



- PAVING KEY NOTES**
- 1. CONSTRUCT CONCRETE CURB, CITY STANDARD CURB (SEE COB STD DWG R-3 SHEET C8.1, ROAD CLASS - LOCAL: E=6" / H = 12")
  - 2. CONSTRUCT HMA PAVEMENT PATCH (STREET TYPE - LOCAL: 4" - LEVEL III HMA ON 6" AGG. BASE, MATCH EXISTING PAVEMENT ELEVATIONS AT SAWCUT LINE)
  - 3. CONSTRUCT 6' WIDTH CURB-TIGHT SIDEWALK (SEE COB STD DWGS R-4B SHEET C8.1)
  - 4. INSTALL STANDARD CATCH BASIN ASSEMBLY (SEE COB STD DWG STR-12 SHEET C8.3)
- SIGNAGE & STRIPING KEY NOTES**
- 1. INSTALL MUTCD R1-1 (36"x36") "STOP" SIGN, STREET NAME SIGNS, POST, AND BASE. (SIGN PLACEMENT PER COB STD DWG R-9 SHEET C8.2)
- SIGNAGE & STRIPING GENERAL NOTES**
- 1. USE PSST ANCHOR BASE FOUNDATION, PER COB STD DWG R-7 SHEET C8.2, FOR SIGNS INSTALLED OUTSIDE OF MEDIAN.

REGISTERED PROFESSIONAL ENGINEER  
PAUL M. HWA  
STATE OF OREGON  
LICENSE NO. 11,203  
EXPIRE DATE: 12/31/2022

**CITY OF BEND NEIGHBORHOOD STREET SAFETY PROGRAM (NSSP) PUBLIC INFRASTRUCTURE PLANS**

PROJECT NO. 17 - WOODRIVER LN PLAN

DESCHUTES COUNTY, OREGON

CITY OF BEND

REVISIONS:

NO.	DESCRIPTION

**HWA**

CIVIL ENGINEERING / SURVEYING / PLANNING  
BANKS & RUTY ROAD, STE. 100, BEND, OR 97703  
WWW.HWAINC.ORG

DESIGNED BY: SCP  
DRAWN BY: SCP  
CHECKED BY: BP  
SCALE: AS NOTED  
FILE: 220413\_C07.dwg

DATE: 09/02/2022

VERIFY SCALES

0 1" BAR EQUALS ONE INCH ON ORIGINAL DRAWING

SHEET:

**C7.2**

HWA # 220413  
NSSP PROJECTS #12 - #17

60% CONSTRUCTION DRAWINGS